

This Torque-Block[®] driven, highly dynamic wire feed device can be used for transporting, holding and positioning spring wires with a diameter of between 0.02 and 0.1 mm. The feed axes are fitted with a measuring system when used in positioning applications.

The Torque-Block[®] control unit *ase/pcs/twa/a* provides the electrical drive.

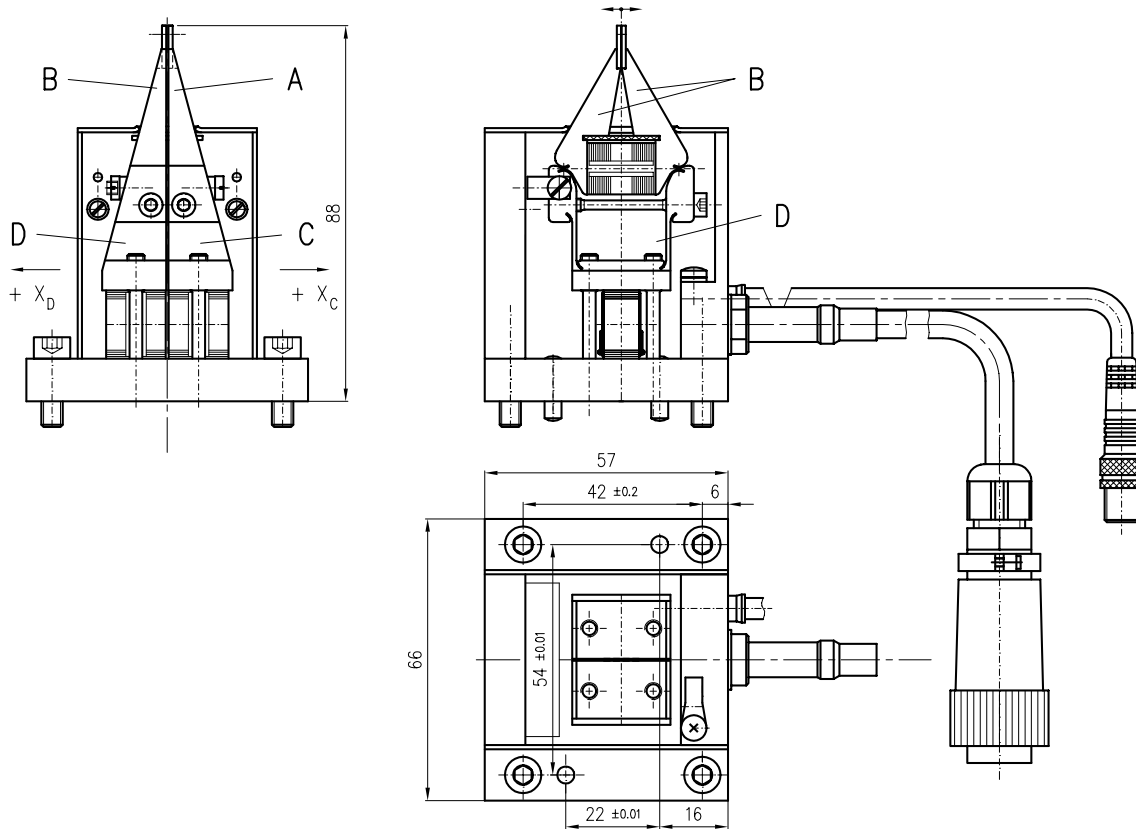
	Feed Axes	Clamping Tongs
Stroke	400 μm	2x100 μm
Stiffness	1 N/ μm	0,5 N/ μm
Resonance frequency	3.8 kHz	1 kHz
Position monitor (output)	1 V $\hat{=}$ 66,6 μm	
Resolution	0.2 μm	50 nm

Operating voltages	drives 400 V measuring systems 12 V/30 mA
Actuator connection	12 pole connector with cap nut 5A/490VDC, manufacturer: Coninvers
Measuring system connection	4 pole M8 connector, manufacturer: Escha
Dimensions (L x B x H)	(57 x 66 x 88) mm
Weight	1 kg
Attachment of table	fastening screw thread M5 (4x) pin drill hole \varnothing 4F8 (2x)

The technical data were determined in conjunction with the control electronics *ase/pcs/twa/a*.

Actuator connection		Measuring system connection	
Contact	Signal	Contact	Signal
1	enable input	1	operating voltage measuring system
2	drive ground	2	position monitor (output) feed 1
3	drive voltage feed 1	3	position monitor (output) feed 2
4	drive voltage feed 2	4	signal ground
5	drive voltage tong 1		
6	drive voltage tong 2		
7	enable output		
8	protection earth		
9	operating voltage feed 1		
10	operating voltage feed 2		
11	operating voltage tong 1		
12	operating voltage tong 2		

We are happy to develop solution-specific variations for our customers.



- A - tong 1
- B - tong 2
- C - feed 1
- D - feed 2

Order Number	Release	Description
asy/txz/v/a	1.0	Antriebseinheit
ase/pcs/twa/a	1.0	Torque-Block®-Ansteuerung