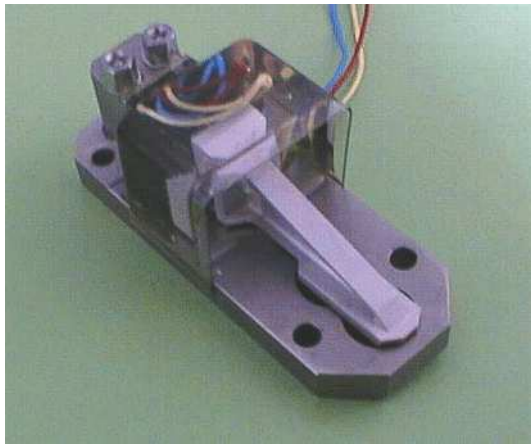
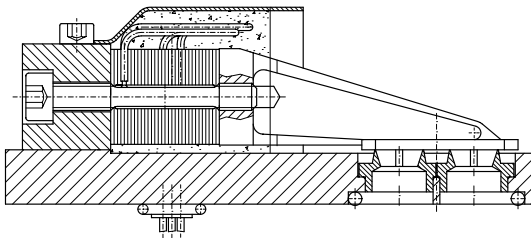


The following is an example of a very fast gas valve with high throughput. Please contact us about your solution-specific application.



The *asy/tgv/ven/b* valves are designed to regulate non- or slightly aggressive gas flows. They allow both a continuous, as well as an "on/off" flow function. The exact properties of the valve are defined through control electronics which can be configured according to your specific requirements.



Technical Data

Dimensions (LxBxH)	(78 x 30 x 29) mm
Maximum operating pressure	8 bar
Switching speed	2 < ms (stroke 0 ... 90%)
Air throughput (dependent upon operating pressure to be switched and cross-section)	ca. 500 l/min
Own resonance of the valve system	ca. 2.5 kHz
Control electronics	typically 24 V

Application

- Sorting of materials, e.g. coffee beans, using fast air pulses.
- Regulating pressure.

Order Number	Release	Description
<i>asy/tgv/ven/b</i>	1.0	Gas valve with two air jets