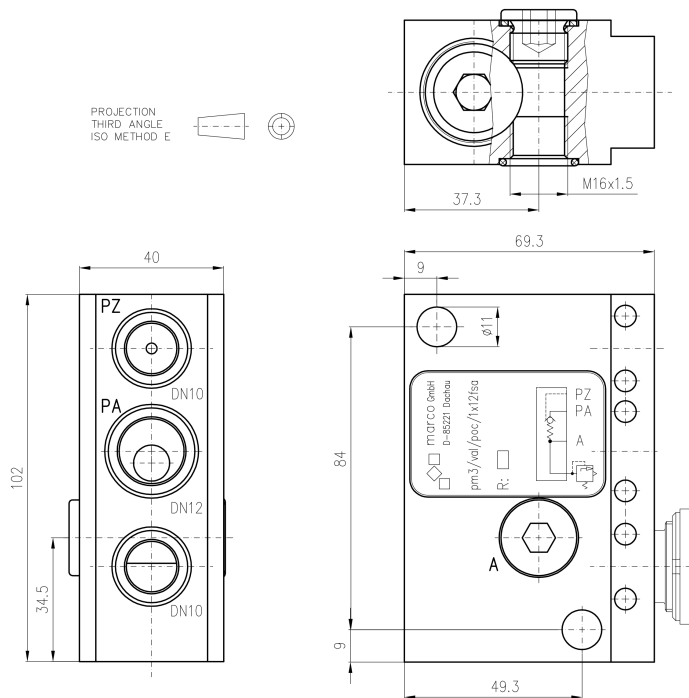


Pilot operated check valve



This pilot operated check valve with flange is screwed directly onto the hydraulic cylinder. The cylinder connection is DN12. The control and yield valve connection is DN10. The valve can be mounted either on the right or left hand side.



pm3/val/poc/1x12fsa

Order number	Description
pm3/val/poc/1x12fsa	Pilot operated check valve, flange version DN12