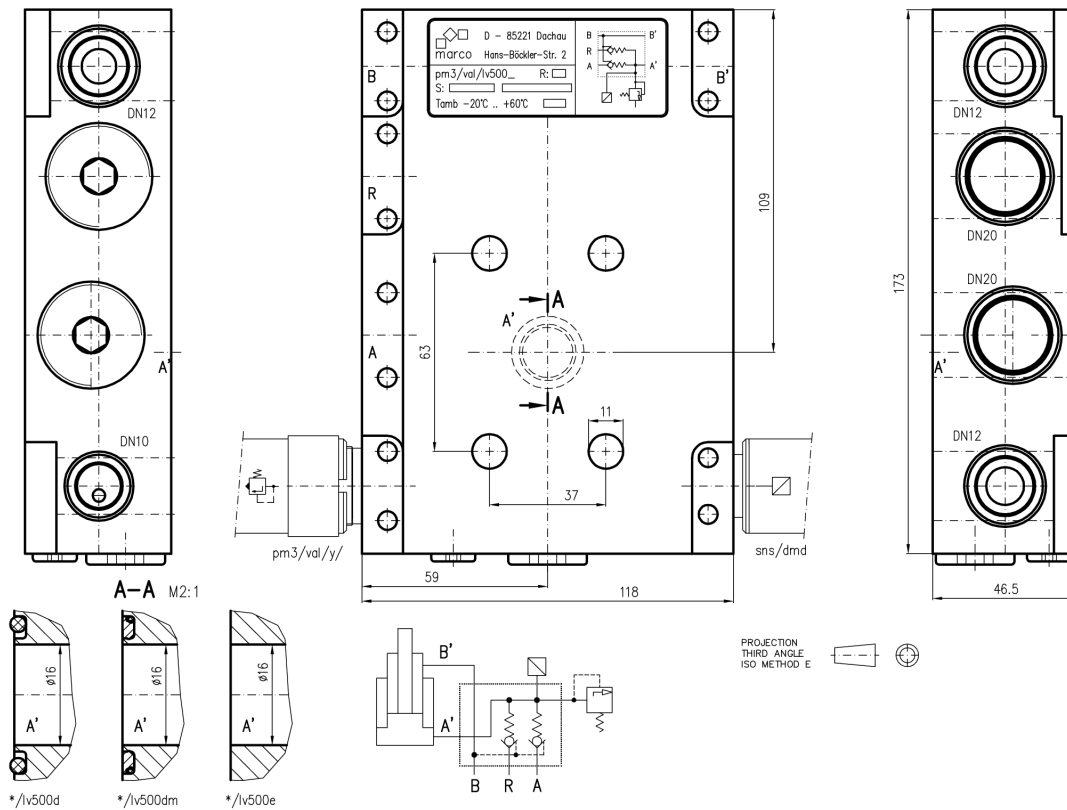


Leg valve 500 l/min, with o-ring groove, with o-ring groove plus seal and without o-ring groove

This leg valve is designed for legs with a large diameter and can be supplied as required with or without an o-ring groove. For trial operation with unknown mounting conditions, the version *pm3/val/lv500dm* should be used as the groove can be sealed with the stopper provided if necessary. The flange connection is for the piston and ring side. This valve drastically increases the flow rate during lowering of a leg as the return can be connected via the hydraulic block and in addition, directly in the return line. The valve's is insensitive to pressure. Both the opening and closing action of the valve is hydraulically delayed to prevent any detrimental vibration of the valve. The yield valve connection is usually in DN12. The valve is mounted using five cheese-head screws DIN 912 M12x55, property class 12.9. It can be mounted with the connections to the left or to the right. This valve can also be used in conjunction with the high pressure setting mechanism (*pm3/val/hps/..*) which can be mounted instead of the sealing screws.



This valve has an additional return line connection which allows a very high flow rate. The design keeps the flow rate through the main block low and requires no additional alternating valve.

*For information about the yield valves, please refer to doc:D/pm3/val/y/002w.

**For Information about the pressure sensor, please refer to doc:D/sns/dmd/001

Order number	Description
pm3/val/lv500d	Leg valve 500 l/min, with o-ring groove
pm3/val/lv500dm	Leg valve 500 l/min, with o-ring groove plus seal
pm3/val/lv500e	Leg valve 500 l/min, without o-ring groove
di:o-22x2,5.sh90 (x2)	O-rings for leg valve
pm3/val/lvc/a	Spare cartridge yellow
pm3/val/lvc/b	Spare cartridge red
di:o-27x2.sh90 (x3)	O-ring (cartridge)
di:o-st.x27,9x31x1,4 (x2)	Thrust ring (cartridge)
di:o-18x2,5.sh90	O-ring (connection)
sns/dmd/.	Pressure transducer **
pm3/val/y/.	Yield valve *