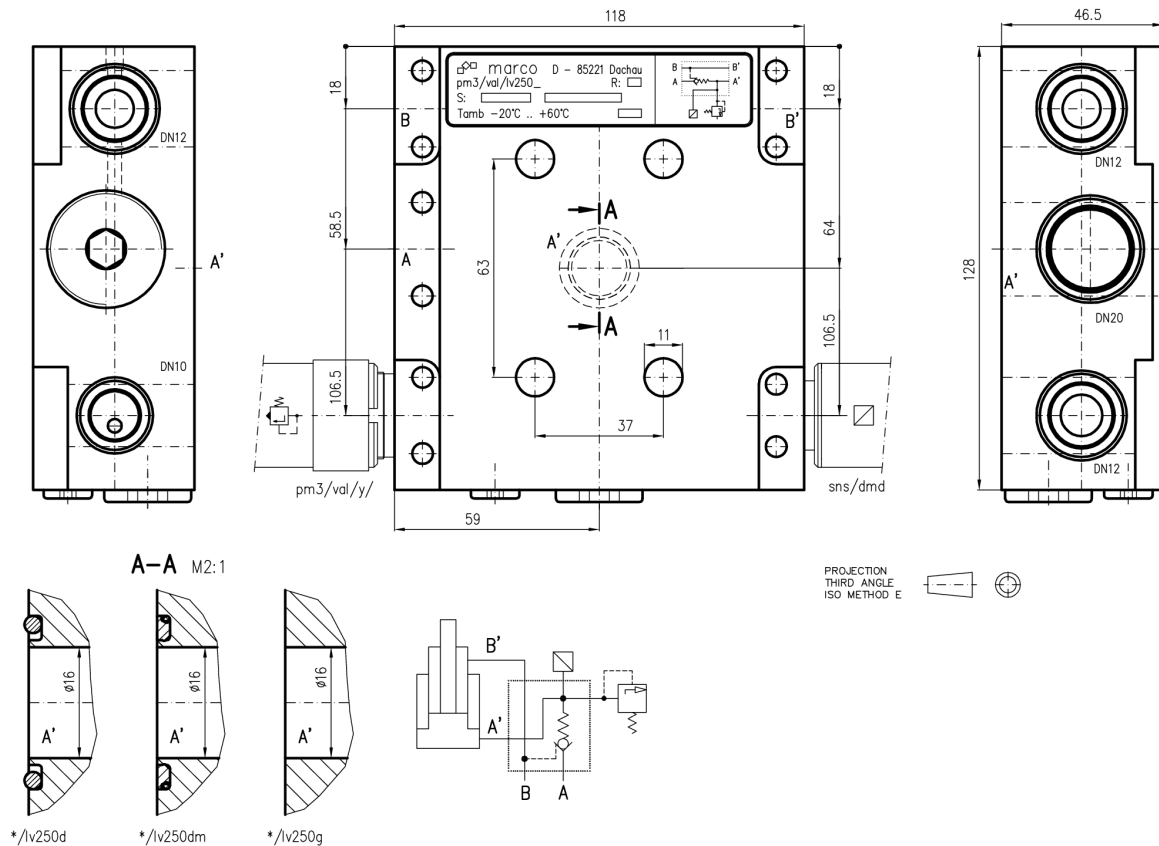


**Leg valve 250l/min, with o-ring groove, with o-ring groove plus seal and without o-ring groove**

This leg valve is designed for legs with a medium diameter and can be supplied as required with or without an o-ring groove. For trial operation with unknown mounting conditions, the version *pm3/val/lv250dm* should be used as the groove can be sealed with the stopper provided if necessary. The flange connection is for the piston side "A". The ring side "B" is connected via a DN12 hose. The valve's design is insensitive to back pressure. Both the opening and closing action of the valve are hydraulically cushioned to prevent any damaging vibration of the valve. The yield valve connection is usually in DN12 so that a yield valve with a flow rate of 1000 l/min can be connected. The valve is mounted using five cheese-head screws, DIN 912 M12x55 property class 12.9. This valve can also be used in conjunction with the high pressure setting mechanism (*pm3/val/hps/..*) which can be mounted instead of the sealing screws. All sealing seats are in high quality PEEK. Operating pressure is 450 bar.



Order number	Description
pm3/val/lv250d	Leg valve 250 l/min, DN12, with o-ring groove
pm3/val/lv250dm	Leg valve 250 l/min, DN12, with o-ring groove plus seal
pm3/val/lv250g	Leg valve 250 l/min, DN12, without o-ring groove
di:o-22x2,5.sh90 (x2)	O-rings for leg valve
pm3/val/lvc/a	Spare cartridge
di:0-27x2.sh90 (x3)	O-ring (cartridge)
di:0-st.x27,9x31x1,4 (x2)	Thrust ring (cartridge)
sns/dmd/.	Pressure transducer
pm3/val/y/.	Yield valve *

\* For information about yield valves, please refer to doc:D/pm3/val/y/002w.

\* For information about pressure sensors, please refer to doc:D/sns/dmd/001.